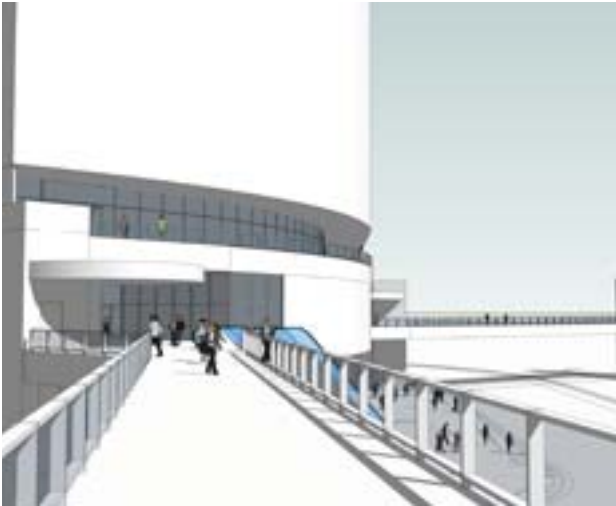
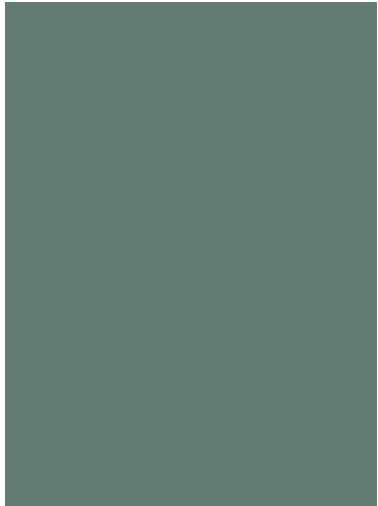


MOHAVE COMMUNITY COLLEGE GRAND OPENING

The MCC Foundation Allied Health Training Center is a specialty lab/classroom/administration building for an expanding program at the college. The training facility is designed to replicate actual hospital and ER conditions with patient cubicle work areas and nurses' station layouts. The classrooms and labs are also linked for video conferencing, recording and broadcasting to remote campuses of the College. The 10,000 SF building includes administrative offices for the program, general purpose classrooms, allied health lab space and two specialty simulation labs with debriefing room.



LAS VEGAS BOULEVARD RETAIL RENAISSANCE
SHARCHITECTURE is excited to be a part of the renewed building activity on the Strip. We are designing a 3-story, 105,500 sf retail center that will include shops and restaurants and be connected to other properties by pedestrian bridges. The project is LEED registered and we anticipate a Gold rating. Construction will start in early 2011 on this locally-driven project. Las Vegas is seizing the opportunity to restart construction with sustainable projects, and we're proud to have our work among the new set of forward-thinking buildings on the Las Vegas Strip.

RTC GRAND OPENING

The Regional Transportation Commission of Southern Nevada and SHARCHITECTURE celebrated the grand opening of the new "Green-frastructure" Bonneville Transit center in downtown Las Vegas. The 20,000 sf facility includes a multi-modal transfer station, bicycle storage and a bicycle repair shop. The RTC retained Sletten Construction to deliver the facility through the CMAR project delivery method. The project is AARA Stimulus-funded, LEED registered and Gold targeted. With a combined effort of the RTC, SHARCHITECTURE and Wright Engineers, NV Energy provided a cash rebate of over \$340,000 to the RTC for the installation of photovoltaic panels and additional energy savings strategies.

